

mastix sa

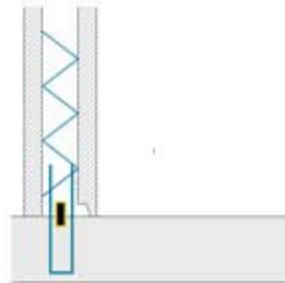
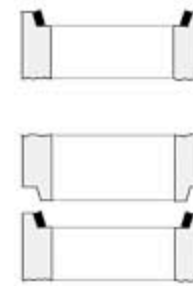
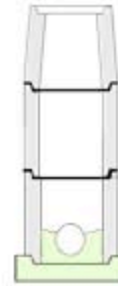
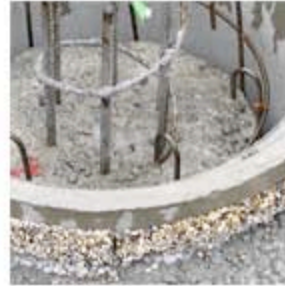
Route Aloys-Fauquez 28
CH 1018 Lausanne

Phone +41216482949
Fax +41216483172
Email mastix@mastix.ch
Internet www.mastix.ch

BFL-Mastix bands

Joints in concrete structures

Work joint
Strinkage joint
Setting joint
Programmed shrinkage joint



Applications

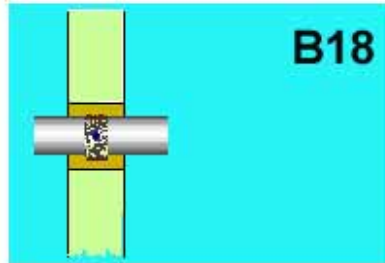
Pipe crossing

Concrete/concrete

work joints

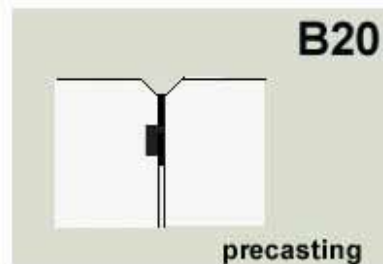
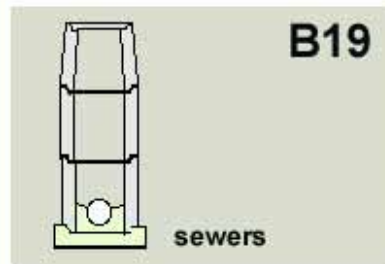
shrinkage/settling joints

**pipe
crossing**

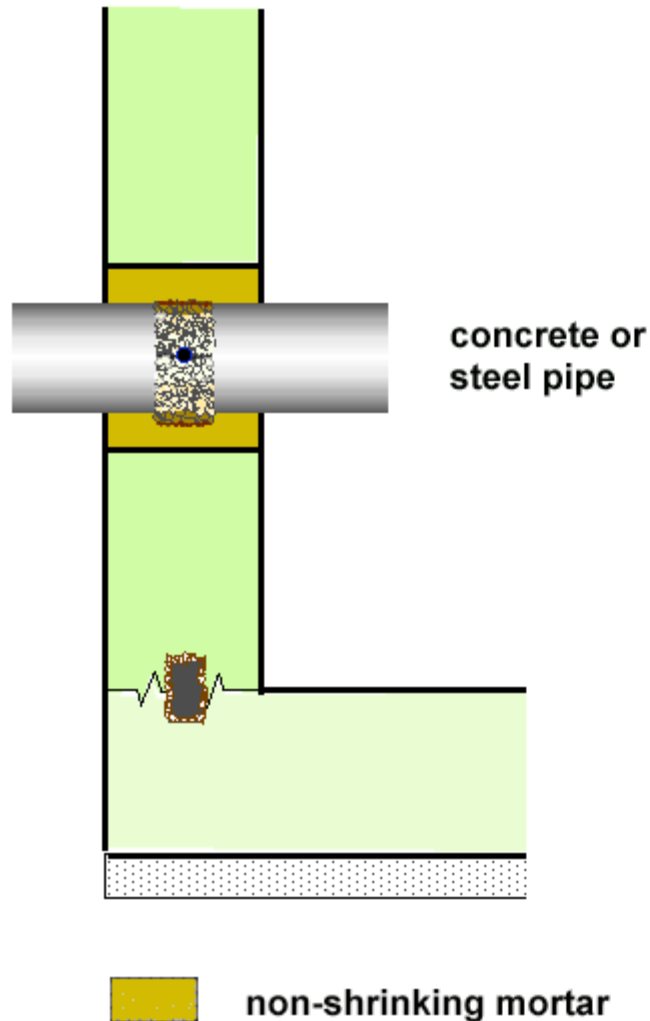


assemblies

**concrete/
concrete**



Joint of a pipe crossing in a wall



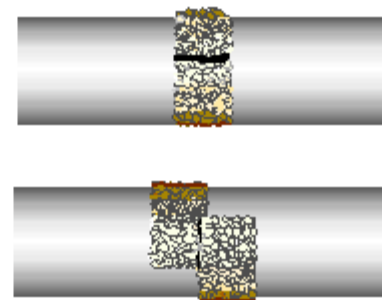
Choice of a BFL-Mastix band

20/70 R
30/40 R

Way of application

The bands are hot glued or with a 2-components epoxy glue.

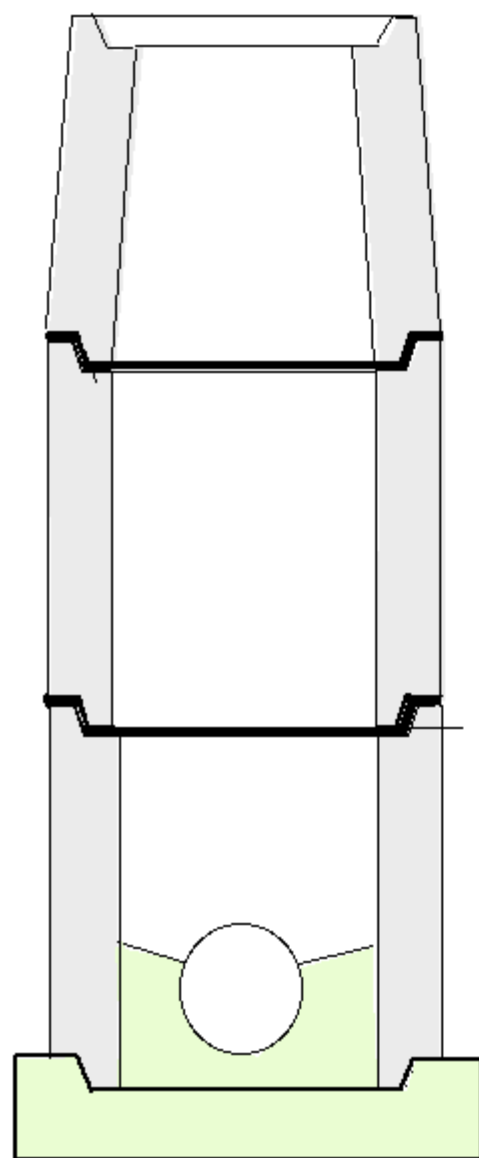
Connections



[back](#)

B18

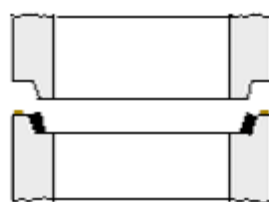
Sewer ducts, control manholes



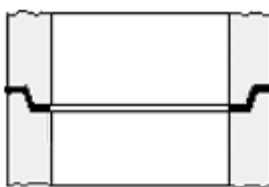
1



2



3



Choice of a BFL-Mastix band



d = height of socket

d up to 30 mm

20/40 N

Way of application

The bands are hot glued

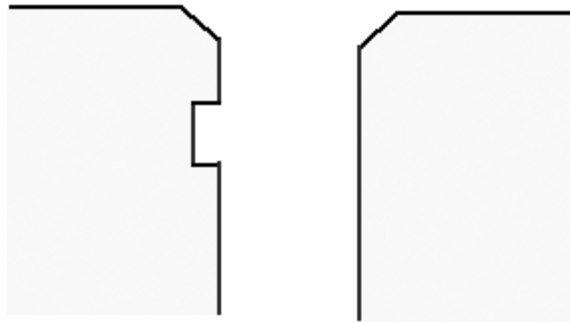
[back](#)

B19

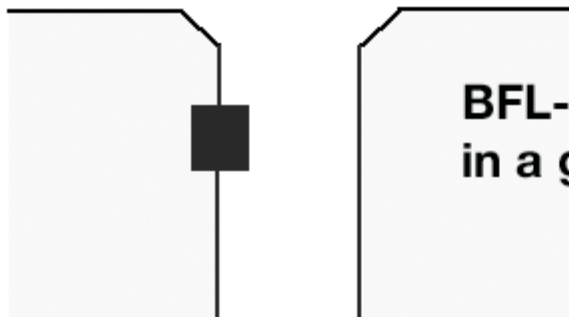
© Mastix SA 06/JM

Precasting

Example of a soft joint between two precast elements

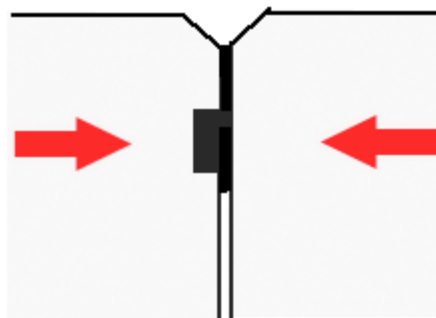


1



BFL-Mastix band
in a groove

2



3

Choice of a BFL-Mastix band

In general, the following BFL-Mastix profile is used :

20/40 N

Way of application

The bands are hot glued or with a 2-components epoxy glue.

[back](#)

B20