

# mastix sa

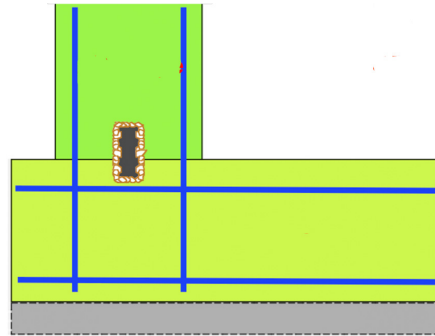
# RAFT-WALL

## Table of contents

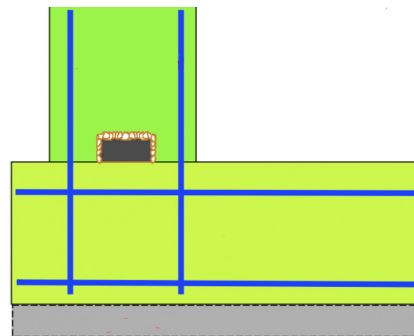


## Table of contents for joints between a raft and walls

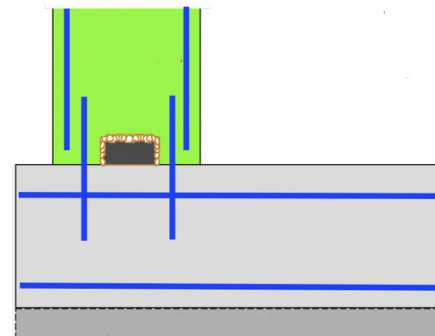
Work or retreat joint with  
BFL-Mastix bands type R4  
between a raft and walls



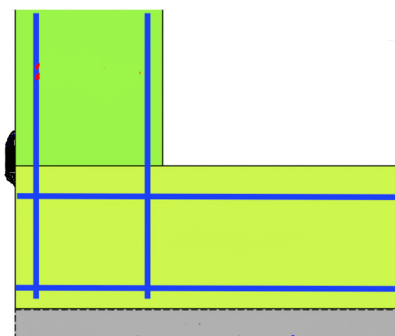
Work or retreat joint with  
BFL-Mastix bands type R  
between a raft and walls



Work or retreat joint with  
BFL-Mastix bands type R  
between an existing raft and  
walls



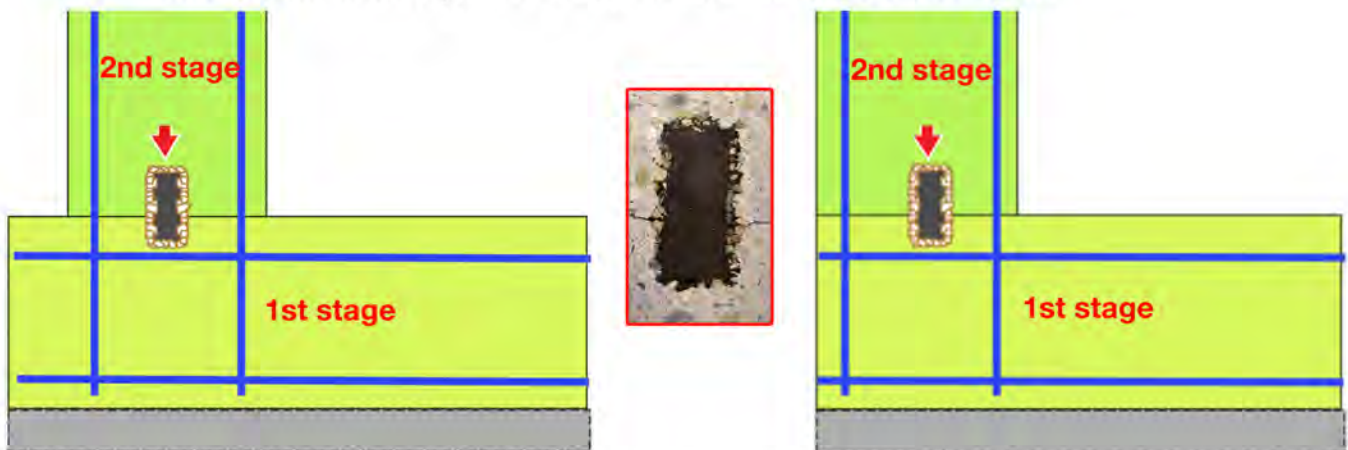
Work or retreat joint with  
BFL-Mastix bands type N  
between an existing raft and  
walls, if it was forgotten to place  
the necessary waterstops.



PICTURES



BFL-Mastix bands type R4 incorporated in the fresh raft concrete.



The BFL-Mastix bands type R4 are tightly anchored in both, raft and wall concrete.

## Choice of a BFL-Mastix band

risk of water infiltration



subsoil water  
- rain  
- spring



water level  
- permanent  
- intermittent



swimming  
- basin  
- reservoir

bands

20/40 R4  
30/40 R4

20/70 R4  
30/40 R4  
40/50 R4  
40/70 R4

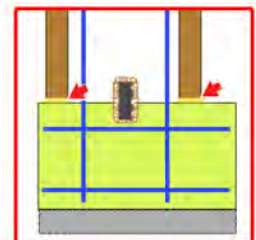
application method



## Application method

The BFL-Mastix bands type R4 are incorporated during the concreting action in the fresh concrete.

For avoiding the loss of cement milk, it is necessary that the foot of the wall formwork is made watertight. This, to avoid the formation of gravel nets and a loss of concrete resistance.



## Tender information

Supply and placing of BFL-Mastix bands (20/40 R4, 30/40 R4, 20/70 R4, 40/50 R4, 40/70 R4) in the fresh concrete of the raft.



Placing of BFL-Mastix bands  
**type R4** in fresh concrete of  
a raft

















In order to avoid smashing the **bands type R4**, it is necessary to create a space under the foot of the metallic formwork.

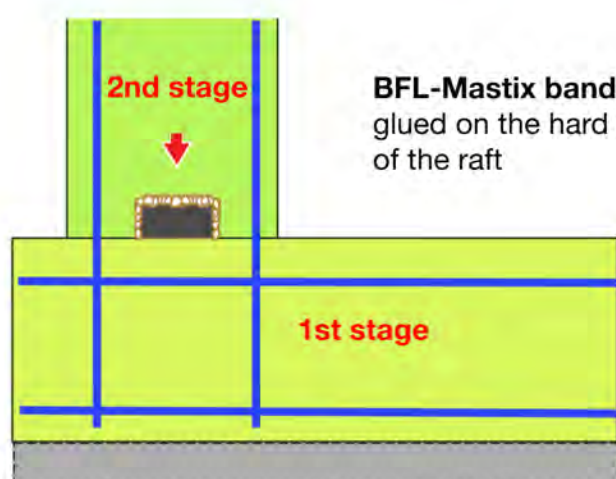


A photograph of a construction site showing a concrete slab being prepared. Numerous vertical rebar rods are visible, some with U-shaped hooks at the top. A yellow text box with a red arrow points to a line of BFL-Mastix waterproofing bands applied along the edge of the slab. To the left, there is a pile of gravel and a metal grate. The background shows wooden formwork and other construction materials.

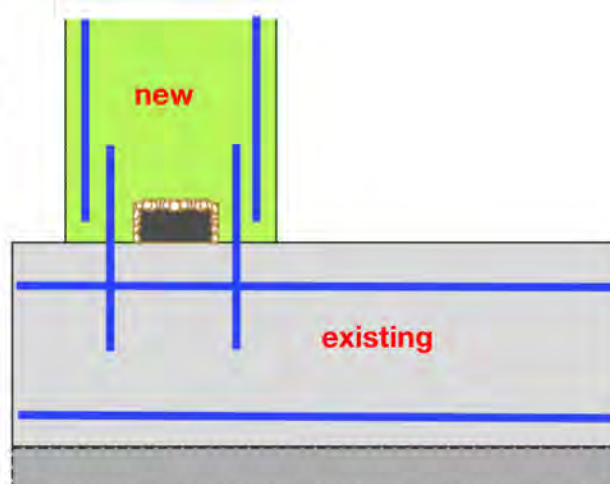
BFL-Mastix waterproofing bands assure a short and long term watertight joint.







**BFL-Mastix bands type R**  
glued on the hard concrete  
of the raft



## Choice of a BFL-Mastix band

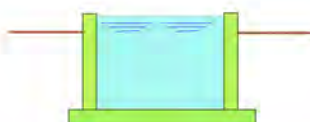
risk of water infiltration



subsoil water  
- rain  
- spring



water level  
- permanent  
- intermittent



swimming  
- basin  
- reservoir

bands

**15/30 R**  
**20/40 R**  
**30/40 R**

**20/70 R**  
**30/40 R**  
**40/50 R**  
**40/70 R**

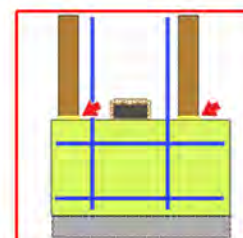
application method



## Application method

The BFL-Mastix bands type R are **hot glued (A)** or with a **2-components epoxy glue (B)** on the hard and clean raft concrete.

**For avoiding the loss of cement milk,** it is necessary that the foot of the wall formwork is made watertight. This, to avoid the formation of gravel nets and a loss of concrete resistance.



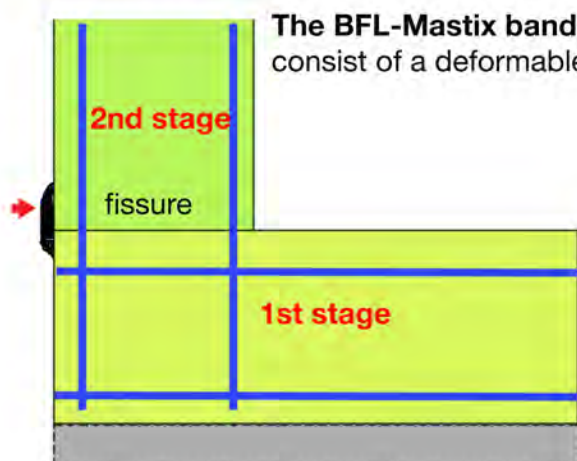
## Tender information

Supply and placing of BFL-Mastix bands (15/30 R, 20/40 R, 30/40 R) hot glued on the hard and clean raft concrete with preliminary application of the BFL-Primer.

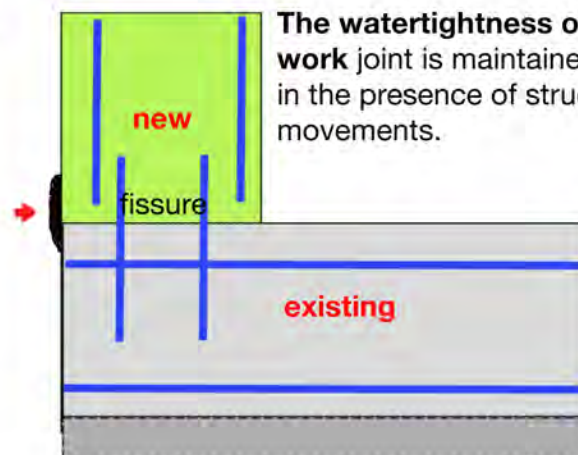
Supply and placing of BFL-Mastix bands (20/70 R, 30/40 R, 40/50 R, 40/70 R) glued with a 2-components epoxy glue.



The BFL-Mastix bands type N consist of a deformable material



The BFL-Mastix bands type N consist of a deformable material



The watertightness of the work joint is maintained even in the presence of structural movements.

## Choice of a BFL-Mastix band

risk of water infiltration



subsoil water  
- rain  
- spring



water level  
- permanent  
- intermittent



swimming  
- basin  
- reservoir

bands

20/20 N  
20/40 N  
30/30 N

application method



## Application method

The BFL-Mastix bands type N are hot glued with the help of a propane gas burner with a jet diameter of 20 to 25 mm.

The preliminary application of a 6 to 8 cm broad BFL-Primer strip impermeabilizes the concrete surface and provides a better band adherence.

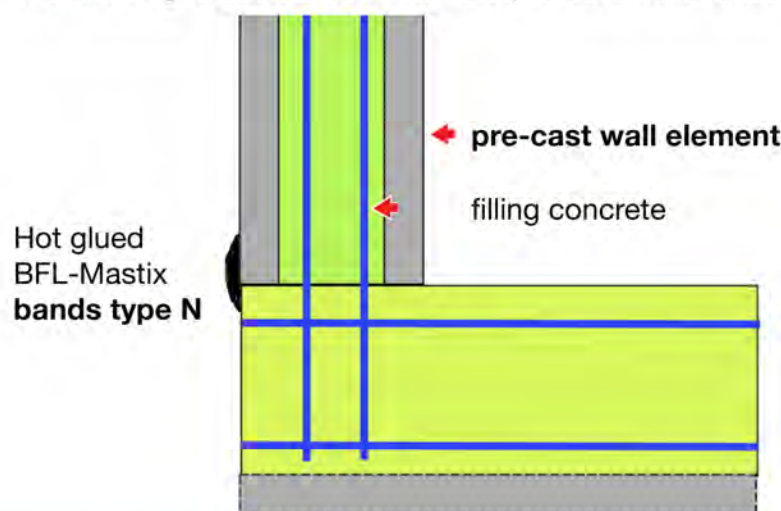
## Tender information

Preliminary application on the clean concrete of a 6 to 8 cm broad BFL-Primer strip on the fissure line of the work joint.

Supply and placing of BFL-Mastix bands (20/20 N, 20/40 N, 30/30N) for external waterproofing. The bands are hot glued on the BFL-Primer strip.



The watertightness between raft and pre-cast walls is assured with **BFL-Mastix bands type N**.



The BFL-Mastix bands type N consist of a deformable material that behaves like a liquid of high viscosity.

The pressure transmitted by the water pushes the band into the joint, thus assuring a permanent watertightness.

## Choice of a BFL-Mastix band

risk of water infiltration



subsoil water  
- rain  
- spring



water level  
- permanent  
- intermittent



swimming  
- basin  
- reservoir

bands

**20/20 N**  
**20/40 N**  
**30/30 N**

application method



## Application method

The **BFL-Mastix bands type N** are **hot** glued with the help of a propane gas burner with a jet diameter of 20 to 25 mm.

The preliminary application of a 6 to 8 cm broad **BFL-Primer** strip impermeabilizes the concrete surface and provides a better band adherence.

## Tender information

Supply and placing of BFL-Mastix bands (20/20 N, 20/40 N, 30/30 N) hot glued on the clean concrete with the preliminary application of a 6 to 8 cm broad strip of BFL-Primer for the external watertightness between raft and pre-cast walls.