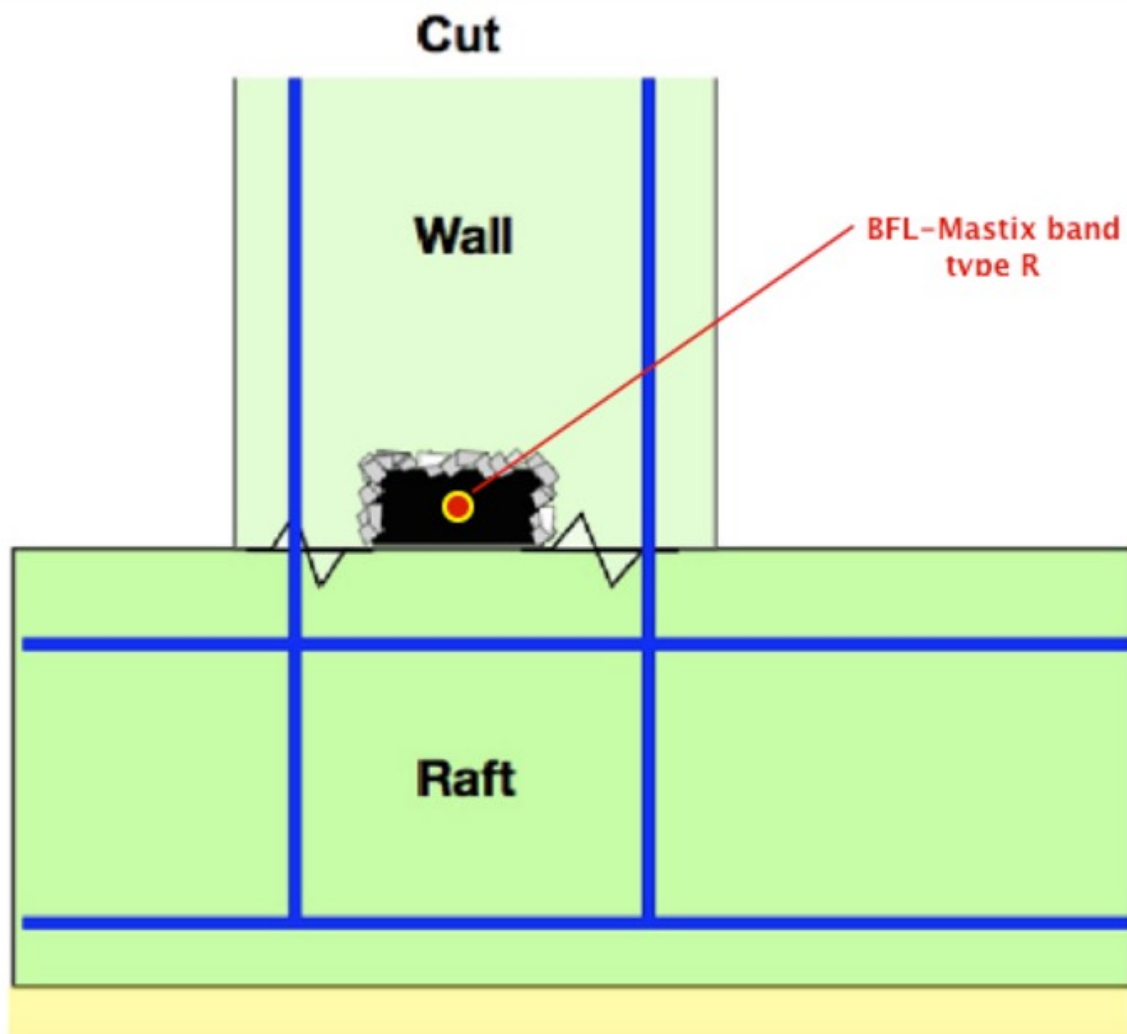




waterproofing joints in concrete structures

**Secure solutions with
BFL-Mastix waterstops**

**Raft
foundation/
Wall
with BFL-Mastix
type R**



The BFL-Mastix waterstops consist of a soft and deformable core, covered with a limestone 4/8mm gravel, connecting afterwards with the cement in the concrete..

The BFL-Mastix waterstops are the very best solution to assure waterproof joints.

Choice of a BFL-Mastix band

Risk of water infiltration



Subsoil water

- rain
- spring

Profiles

20/40 R

12 m'/Box

30/40 R

9 m'/Box



Water level

- permanent
- intermittent

20/70 R

6 m'/Box

30/40 R

9 m'/Box



Basins

- swimming pool
- reservoir

40/50 R

6 m'/Box

40/70 R

6 m'/Box

40/100 R

3.60 m'/Box

Fresh concrete does not stick to steel, glas, plastik or oiled formwork

Tender text

Supply and gluing of BFL-Mastix waterstops type R on the raft concrete to create a durable waterproofing joint with the rising walls.

BFL-Mastix waterstops type R are glued with Mastix MS-Polymer.

BFL-Mastix waterstops type R consist of a waterproof and soft core to absorb movements.

The core is on three sides coated with fine gravel size 4/8 mm to assure adhesion on fresh concrete.

The non gravel coated side is for gluing the band.

Profile m

Gluing of BFL-Mastix bands

- 1** The glue Mastix MS-Polymer is to be applied in thin layers on the corresponding surfaces.
A pressure is to be applied on the glued bands until the glue is laterally appearing.



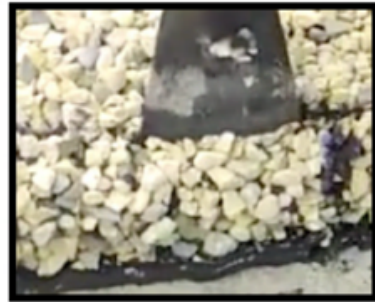
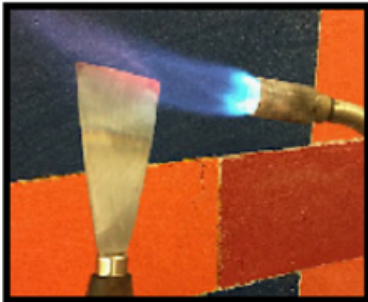
- 2** Band connections are made with the glue Mastix MS-Polymer, but without debording on the gravel cover.



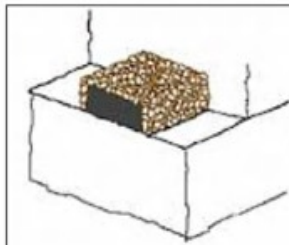
- 3** To control the adherence, it just needs trying to pull off the band.

Connection between BFL-Mastix bands

- 1** The BFL-Mastix waterstops are connected black on black.
- 2** With a slightly heated metallic spatula, just scratch off the gravel on the gluing surface.
- 3** For connecting bands, the glue can be used or a small gas burner.
In both cases the glue should not cover the fine gravel.

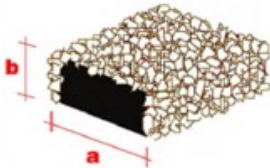


Characteristics of bands type R



BFL-Mastix waterstops type R
consist of :

- a rubber/bitumen core, deformable.
- special fine non alkali-reactive gravel, solidly anchored in the factory on three sides of the core.

	Bands		Dimensions		Length	Conditioning	Weight
			cm	cm	cm	m'/box	kg/m'
			* a	* b			
	15/30 R		4.00	2.00	60	21.00	1.00
	20/40 R		5.00	2.50	60	12.00	1.80
	20/70 R		8.00	2.50	60	6.00	2.80
	20/120 R		13.00	2.50	60	6.00	4.50
	30/40 R		5.00	3.50	60	9.00	2.50
	40/50 R		6.00	4.50	60	6.00	4.00
	40/70 R		8.00	4.50	60	6.00	4.50
	40/100 R		11.00	4.50	60	3.60	6.00

* Because of the plasto-elastic behaviour of the core, the dimensions **a** and **b** can alter a bit.

Waterproofing of construction joints depends on the products

Characteristics of fine crushed gravel

The fine crushed gravel mechanically pressed on the band cores is of :

- broken limestone
- size 4/8 mm
- rough material for best adhesion with the cement paste
- porous surface for easy penetration by the cement paste to reinforce the waterproofing with the BFL-Mastix system
- alkali-non reactive

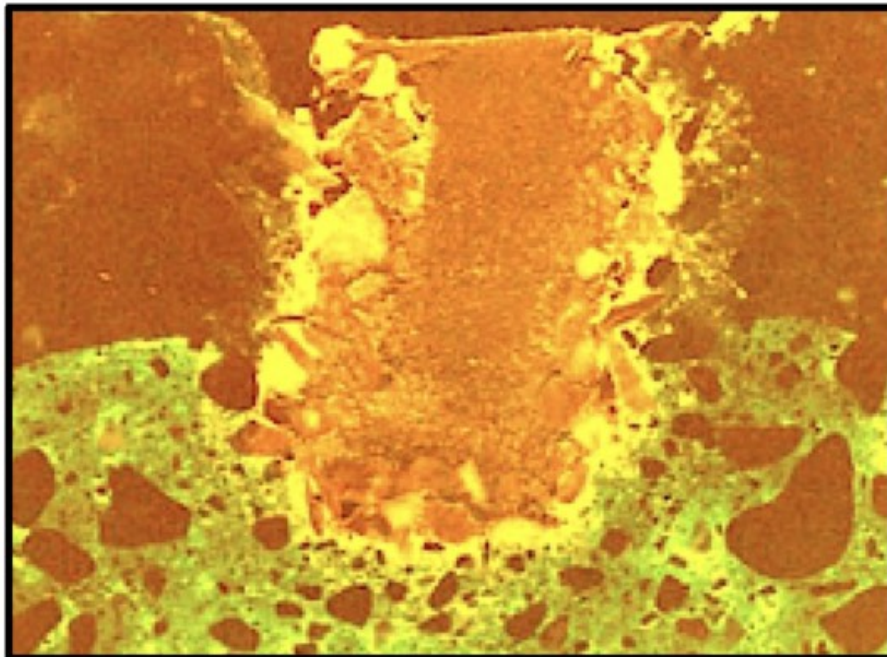
Capillarity test

No capillar rising water

has been observed (green color), neither in the interfaces concrete/gravel and core/fine gravel.

A bad adhesion of the fine gravel on the core **could not be remarked**.

A bad adhesion of the gravel coating on the core with the concrete **was not observed**.



Glue Mastix MS - Polymer

Presentation

- The black glue Mastix MS-Polymer is delivered in 310 ml. cartridges. The glue is applied with the usual pistol.
- The glue Mastix MS-Polymer assures a perfect liaison of BFL-Mastix waterstops with concrete, steel and PVC.



Using

- The glue Mastix MS-Polymer is applied in a thin layer on the gravel-free side of the BFL-Mastix waterstops.
- The bands are placed on the clean, dry or humid gluing surface by pressing the bands on this surface until a slight quantity of glue is laterally squeezed out.
- Connecting bands is done with the glue Mastix MS-Polymer, but avoiding to spread it over the gravel coating.
- After polymerization (hardening) of the glue, an adherence test should be made by trying to rip off the band.
- Before gluing the waterstops on PVC or steel, a careful cleaning of fat layers by brushing, flaming or industrial cleaners must be carried out.

Adherence

- The glue Mastix MS-Polymer assures an excellent adhesion on hard, clean, humid or freshly stripped concrete.
The elasticity of Mastix MS-Polymer avoids the rupture of the gluing interface during the unavoidable movements in concrete structures.

Resistance

- Mastix MS-Polymer presents an excellent resistance against weather, high stability against UV, good resistance against light, heat and aging.
The usual working range with Mastix MS-Polymer is between -40°C and +90°C.

Connection

- Mastix MS-Polymer assures an excellent liaison with :
 - dry and clean concrete
 - freshly stripped concrete : clean and moist
 - humid concrete
 - steel
 - thermo-plastic materials (except PE – PP – PTFE)

Hardening

- Mastix MS-Polymer dries under influence of ambient air humidity. The hardening starts on the surface and continues towards inside. At a temperature of +23°C and a relative air humidity of about 50%, the hardening progress is about 2 to 4 mm per day.
High temperature and humidity of the air accelerate the hardening, whilst low temperature and low humidity slow down the hardening.

Storing

- Storing of Mastix MS-Polymer cartridges should be in fresh and dry spaces.
Storing temperature should be between +10°C and +23°C.
Protect the cartridges against cold, heat and strong sunshine.

Security

- Handling and placing BFL-Mastix waterstops is without danger for the workmen's health.
During the gluing procedure, it is recommended to use gloves and protection spectacles.

ISO certificate



THE INTERNATIONAL CERTIFICATION NETWORK

CERTIFICATE

SQS has issued an IQNet recognized certificate that the organization:

MASTIX SA
28, Aloys-Fauquez
1018 Lausanne
Switzerland

has implemented and maintains a
Management System

for the following scope:

Further sites according to appendix SQS

which fulfills the requirements of the following standard(s):

ISO 9001:2015

Issued on: 2020-09-23

Expires on: 2023-06-15

This attestation is directly linked to the IQNet Partner's original certificate and shall not be used as a stand-alone document

Registration Number: CH-H12396



Alex Stoichitoiu
President of IQNet

Felix Müller
CEO SQS



IQNet Partners*:
AENOR Spain AFNOR Certification France APCER Portugal CCC Cyprus CISQ Italy
CQC China CQM China CQS Czech Republic Cro Cert Croatia DQS Holding GmbH Germany EAGLE Certification Group USA
FCAV Brazil FONDONORMA Venezuela ICONTEC Colombia Inspecta Sertifiointi Oy Finland INTECO Costa Rica
IRAM Argentina JQA Japan KFO Korea MIRTEC Greece MSZT Hungary Nemko AS Norway NSAI Ireland
NYCE-SIGE México PCBC Poland Quality Austria Austria RR Russia SII Israel SIQ Slovenia
SIRIM QAS International Malaysia SQS Switzerland SRAC Romania TEST StPetersburg Russia TSE Turkey YUQS Serbia

* The list of IQNet partners is valid at the time of issue of this certificate. Updated information is available under www.iqnet-certification.com

Mastix SA

www.mastix.ch
mastix@mastix.ch