

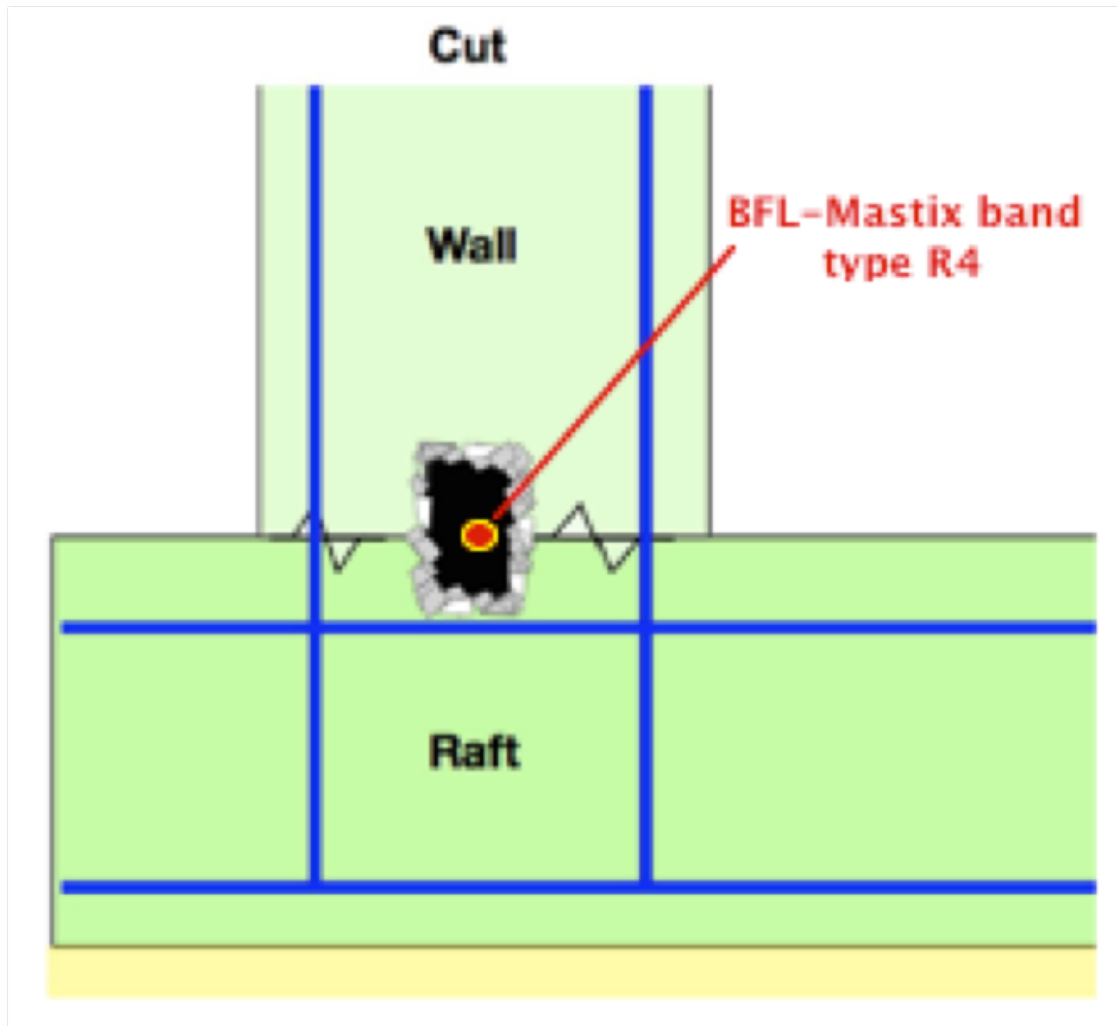


waterproofing joints in concrete structures

**Secure solutions with
BFL-Mastix waterstops**

**Raft
foundation/
Walls**

**with BFL-Mastix
type R4**



The BFL-Mastix waterstops consist of a soft and deformable core, covered with a limestone 4/8mm gravel, connecting afterwards with the cement in the concrete..

The BFL-Mastix waterstops are the very best solution to assure waterproof joints.

Choice of a BFL-Mastix band

Risk of water infiltration

Profiles



Subsoil water
- rain
- spring

20/40 R4

12 m'/Box

30/40 R4

9 m'/Box



Water level
- permanent
- intermittent

20/70 R4

6 m'/Box

30/40 R4

9 m'/Box



Basins
- swimming pool
- reservoir

40/50 R4

6 m'/Box

40/70 R4

6 m'/Box

40/100 R4

**Fresh concrete does not stick to steel,
glas, plastik or oiled formwork**

Tender text

Raft foundation / Wall

With waterstops type R4

Supply and incorporating of BFL-Mastix waterstops type R4 in the raft concrete to create a durable waterproofing joint with the rising walls.

BFL-Mastix waterstops type R4 consist of a waterproof and soft core to absorb movements.

The core is coated with fine gravel size 4/8 mm to assure adhesion in fresh concrete.

Profile m'

Placing of BFL-Mastix waterstops type R4

- 1** BFL-Mastix waterstops type R4 are incorporated in fresh concrete. Half of their height is in the concrete and half above, in a waiting position.

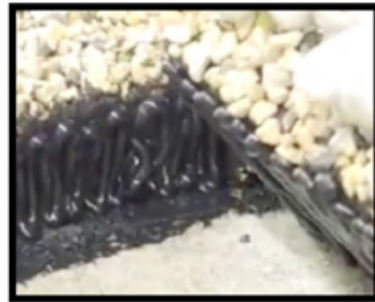
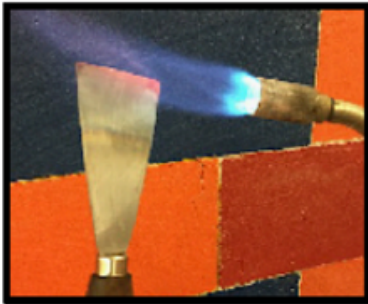


- 2** Connecting waterstops ends is done by heating them for some seconds with a small propane gas burner or with the glue Mastix MS-Polymer.



Connection between BFL-Mastix bands

- 1** The BFL-Mastix waterstops are connected black on black.
- 2** With a slightly heated metallic spatula, just scratch off the gravel on the gluing surface.
- 3** For connecting bands, the glue can be used or a small gas burner.
In both cases the glue should not cover the fine gravel.

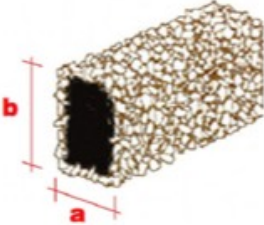


Characteristics of bands type R4



BFL-Mastix waterstops type R4 consist of :

- a rubber/bitumen core, deformable.
- special fine non alkali-reactive gravel, solidly anchored in the factory on all four sides of the core.



Bands	Dimensions		Length	Conditioning	Weight
	cm	cm			
	* a	* b			
20/40 R4	3.00	5.00	60	12.00	2.40
20/70 R4	3.00	8.00	60	6.00	4.00
20/120 R4	13.00	3.00	60	4.20	5.50
30/40 R4	4.00	5.00	60	9.00	3.50
40/50 R4	5.00	6.00	60	6.00	5.00
40/70 R4	5.00	8.00	60	6.00	5.50
40/100 R4	5.00	11.00	60	3.60	7.00

* Because of the plasto-elastic behaviour of the core, the dimensions **a** and **b** can alter a bit.

Waterproofing of construction joints depends on the products

Characteristics of fine crushed gravel

The fine crushed gravel mechanically pressed on the band cores is of :

- broken limestone
- size 4/8 mm
- rough material for best adhesion with the cement paste
- porous surface for easy penetration by the cement paste to reinforce the waterproofing with the BFL-Mastix system
- alkali-non reactive

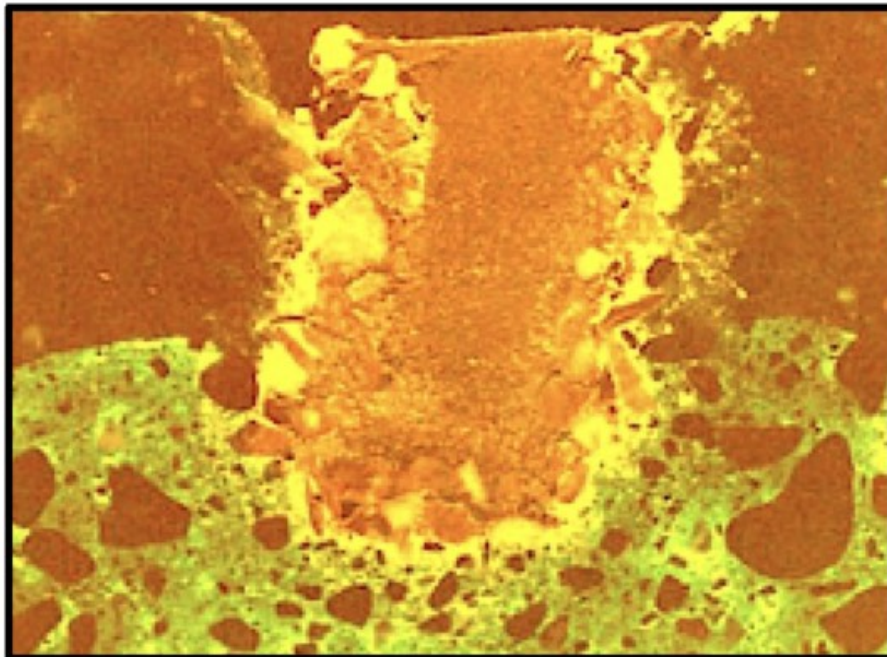
Capillarity test

No capillar rising water

has been observed (green color), neither in the interfaces concrete/gravel and core/fine gravel.

A bad adhesion of the fine gravel on the core **could not be remarked**.

A bad adhesion of the gravel coating on the core with the concrete **was not observed**.



The durability

The fine crushed gravel, covering entirely or partially the core of the deformable BFL-Mastix waterstops, assures a perfect physical adhesion with the cement paste in the concrete.

This physical adhesion in the concrete is being improved over the years through the chemical adhesion.

ISO certificate



THE INTERNATIONAL CERTIFICATION NETWORK

CERTIFICATE

SQS has issued an IQNet recognized certificate that the organization:

MASTIX SA
28, Aloys-Fauquez
1018 Lausanne
Switzerland

has implemented and maintains a

Management System

for the following scope:

Further sites according to appendix SQS

which fulfills the requirements of the following standard(s):

ISO 9001:2015

Issued on: 2020-09-23

Expires on: 2023-06-15

This attestation is directly linked to the IQNet Partner's original certificate and shall not be used as a stand-alone document

Registration Number: CH-H12396



Alex Stoichitoiu
President of IQNet

Felix Müller
CEO SQS



IQNet Partners*:

AENOR Spain AFNOR Certification France APCER Portugal CCC Cyprus CISQ Italy
CQC China CQM China CQS Czech Republic Cro Cert Croatia DQS Holding GmbH Germany EAGLE Certification Group USA
FCAV Brazil FONDONORMA Venezuela ICONTEC Colombia Inspecta Seritoint Oy Finland INTECO Costa Rica
IRAM Argentina JQA Japan KPO Korea MIRTEC Greece MSZT Hungary Nemko AS Norway NSAI Ireland
NYCE-SIGE Mexico PCBC Poland Quality Austria Austria RR Russia SII Israel SIQ Slovenia
SIRIM QAS International Malaysia SQS Switzerland SRAC Romania TEST StPetersburg Russia TSE Turkey YUQS Serbia

* The list of IQNet partners is valid at the time of issue of this certificate. Updated information is available under www.iqnet-certification.com

Mastix SA

www.mastix.ch
mastix@mastix.ch