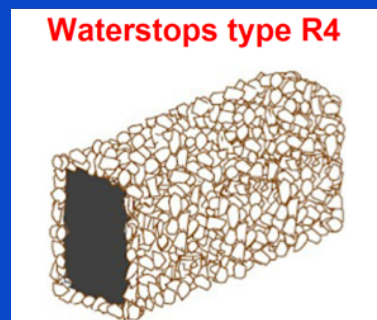
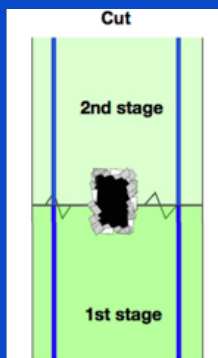


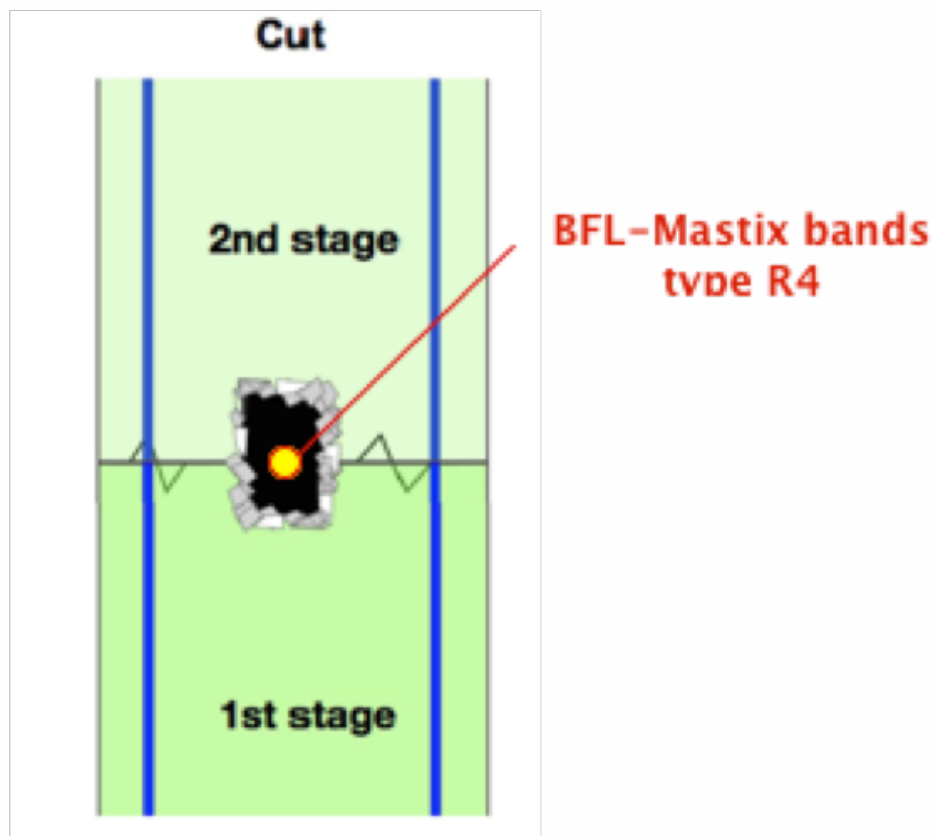


waterproofing joints in concrete structures

**Secure solutions with
BFL-Mastix waterstops**

**Wall /Wall
with BFL-Mastix
type R4**





The BFL-Mastix waterstops consist of a soft and deformable core, covered with a limestone 4/8 mm gravel, connecting afterwards with the cement in the concrete.

The BFL-Mastix waterstops are the very best solution to assure waterproof joints.

Choice of a BFL-Mastix band

Risk of water infiltration

Profiles



Subsoil water
- rain
- spring

20/40 R4

12 m'/Box

30/40 R4

9 m'/Box



Water level
- permanent
- intermittent

20/70 R4

6 m'/Box

30/40 R4

9 m'/Box



Basins
- swimming pool
- reservoir

40/50 R4

6 m'/Box

40/70 R4

6 m'/Box

40/100 R4

**Fresh concrete does not stick to steel,
glas, plastik or oiled formwork**

Tender text

Wall / Wall

With waterstops type R

Supply and horizontal gluing of BFL-Mastix waterstops type R on a wall concrete to create a durable waterproofing between horizontal concreting stages.

BFL-Mastix waterstops type R are glued with Mastix MS-Polymer.

BFL-Mastix waterstops type R consist of a waterproof and soft core to absorb movements.

The core is on three sides coated with fine gravel size 4/8 mm to assure adhesion on fresh concrete.

The non gravel coated side is for gluing the band.

Profile m'

Placing of BFL-Mastix waterstops type R4

- 1** BFL-Mastix waterstops type R4 are incorporated in fresh concrete. Half of their height is in the concrete and half above, in a waiting position.

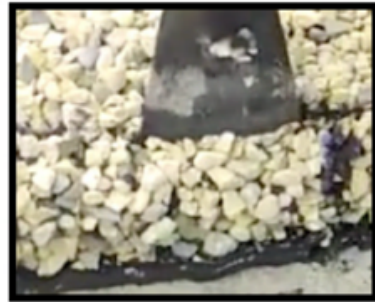
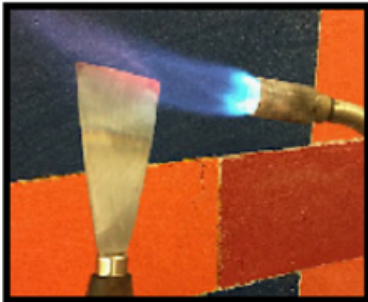


- 2** Connecting waterstops ends is done by heating them for some seconds with a small propane gas burner or with the glue Mastix MS-Polymer.



Connection between BFL-Mastix bands

- 1** The BFL-Mastix waterstops are connected black on black.
- 2** With a slightly heated metallic spatula, just scratch off the gravel on the gluing surface.
- 3** For connecting bands, the glue can be used or a small gas burner.
In both cases the glue should not cover the fine gravel.

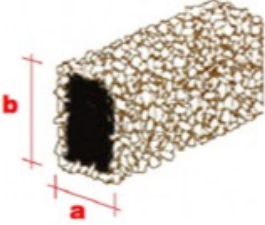


Characteristics of bands type R4



BFL-Mastix waterstops type R4 consist of :

- a rubber/bitumen core, deformable.
- special fine non alkali-reactive gravel, solidly anchored in the factory on all four sides of the core.



Bands	Dimensions		Length	Conditioning	Weight
	cm	cm	cm	m'/box	kg/m'
	* a	* b			
20/40 R4	3.00	5.00	60	12.00	2.40
20/70 R4	3.00	8.00	60	6.00	4.00
20/120 R4	13.00	3.00	60	4.20	5.50
30/40 R4	4.00	5.00	60	9.00	3.50
40/50 R4	5.00	6.00	60	6.00	5.00
40/70 R4	5.00	8.00	60	6.00	5.50
40/100 R4	5.00	11.00	60	3.60	7.00

* Because of the plasto-elastic behaviour of the core, the dimensions **a** and **b** can alter a bit.

Waterproofing of construction joints depends on the products

Characteristics of fine crushed gravel

The fine crushed gravel mechanically pressed on the band cores is of :

- broken limestone
- size 4/8 mm
- rough material for best adhesion with the cement paste
- porous surface for easy penetration by the cement paste to reinforce the waterproofing with the BFL-Mastix system
- alkali-non reactive

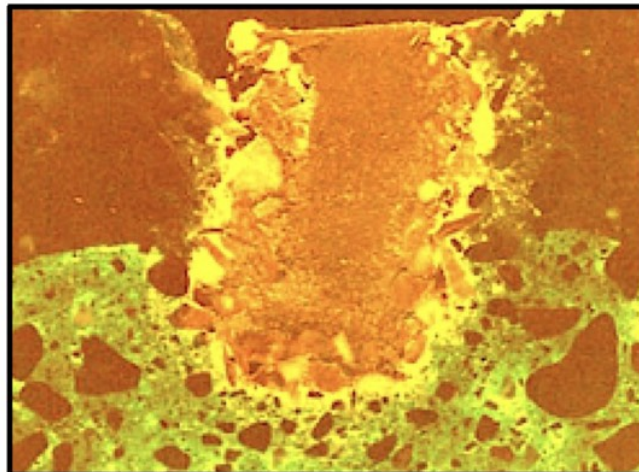
Capillarity test

No capillar rising water

has been observed (green color), neither in the interfaces concrete/gravel and core/fine gravel.

A bad adhesion of the fine gravel on the core **could not be remarked**.

A bad adhesion of the gravel coating on the core with the concrete **was not observed**.



BFL- Mastix waterstops can permanemtly adhere to fresh or hard concrete

The durability

The fine crushed gravel, covering entirely or partially the core of the deformable BFL-Mastix waterstops, assures a perfect physical adhesion with the cement paste in the concrete.

This physical adhesion in the concrete is being improved over the years through the chemical adhesion.

ISO certificate



THE INTERNATIONAL CERTIFICATION NETWORK

CERTIFICATE

SQS has issued an IQNet recognized certificate that the organization:

MASTIX SA
28, Aloys-Fauquez
1018 Lausanne
Switzerland

has implemented and maintains a
Management System

for the following scope:

Further sites according to appendix SQS

which fulfills the requirements of the following standard(s):

ISO 9001:2015

Issued on: 2020-09-23

Expires on: 2023-06-15

*This attestation is directly linked to the IQNet Partner's original certificate and shall not be used as
a stand-alone document*

Registration Number: CH-H12396



Alex Stoichitoiu
President of IQNet

Felix Müller
CEO SQS



IQNet Partners*:

AENOR Spain AFNOR Certification France APCER Portugal CCC Cyprus CISQ Italy
CQC China CQM China CQS Czech Republic Cro Cert Croatia DQS Holding GmbH Germany EAGLE Certification Group USA
PCAV Brazil FONDONORMA Venezuela ICONTEC Colombia Inspecta Sertifiointi Oy Finland INTECO Costa Rica
IRAM Argentina JQA Japan KFQ Korea MIRTEC Greece MSZT Hungary Nemko AS Norway NSAI Ireland
NYCE-SIQE Mexico PCBC Poland Quality Austria Austria RR Russia SII Israel SIQ Slovenia
SIRIM QAS International Malaysia SQS Switzerland SRAC Romania TEST St Petersburg Russia TSE Turkey YUQS Serbia

* The list of IQNet partners is valid at the time of issue of this certificate. Updated information is available under www.iqnet-certification.com

Mastix SA
www.mastix.ch
mastix@mastix.ch